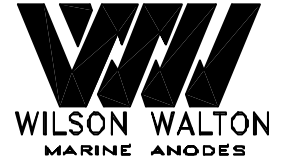
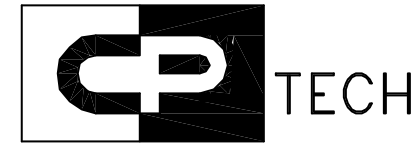


'S' type core bolted to brackets



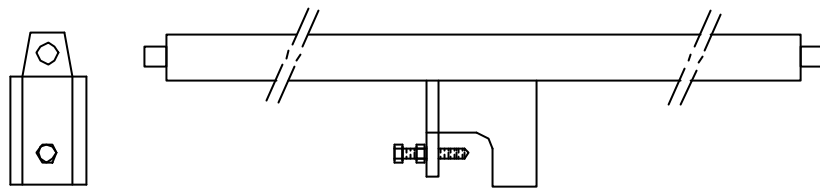
Cathodic Protection Technology Pte Ltd

4 Tuas Drive 1 Singapore 638671

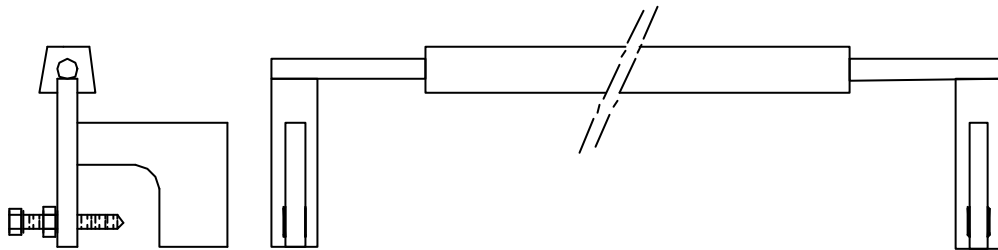
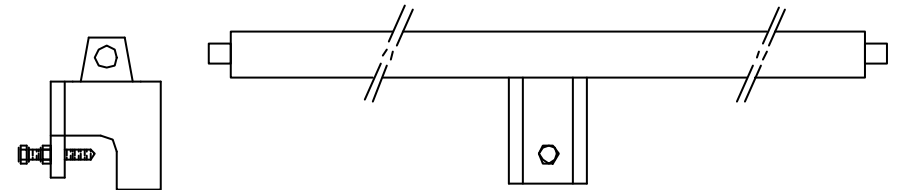
Tel: 6862-3551

Fax: 6861-6436

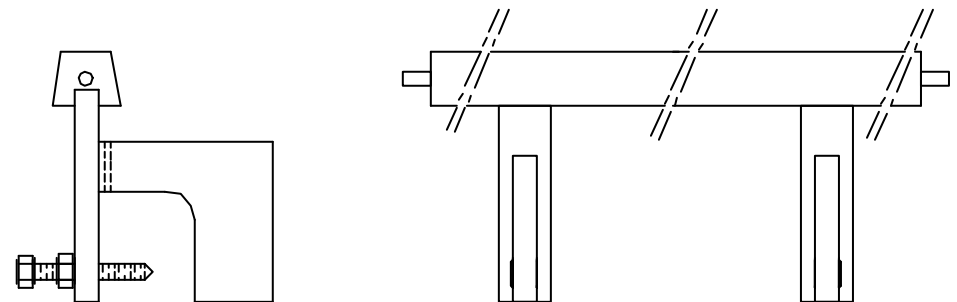
Email : [cptech@singnet.com.sg](mailto:cptech@singnet.com.sg)



'C' type centre clamps



'E' type extended clamp



'D' type integral clamp



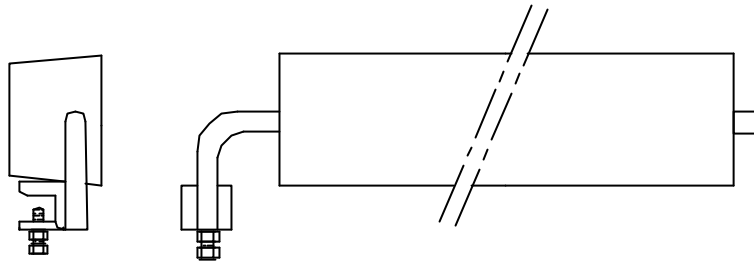
Cathodic Protection Technology Pte Ltd

4 Tuas Drive 1 Singapore 638671

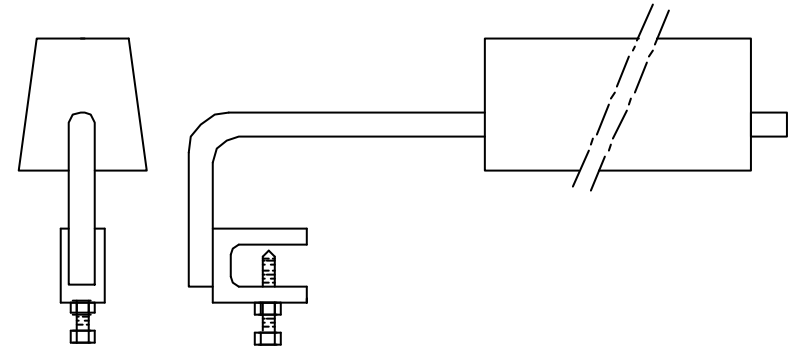
Tel: 6862-3551

Fax: 6861-6436

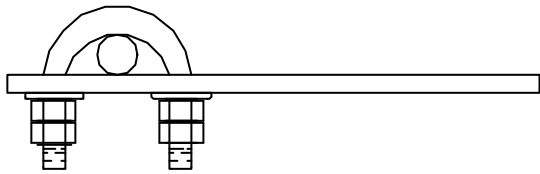
Email : [cptech@singnet.com.sg](mailto:cptech@singnet.com.sg)



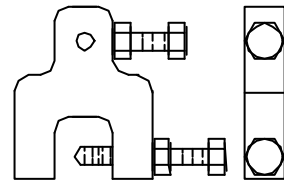
Budget clamp



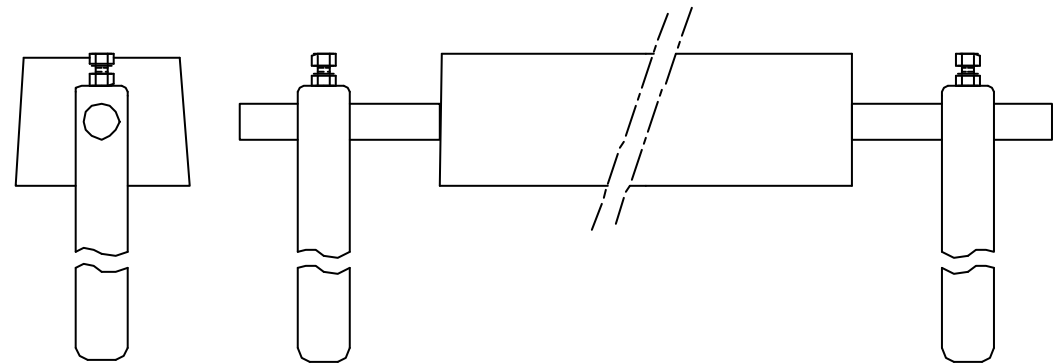
Pitguard clamp



Bolt clamp



"M" type clamp

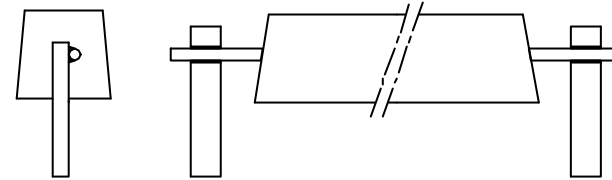


Bar clamp

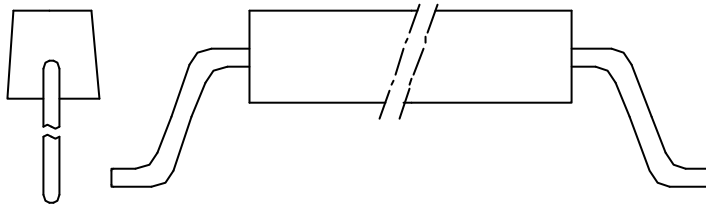
Alternative Tank Anode Fixing Methods 2



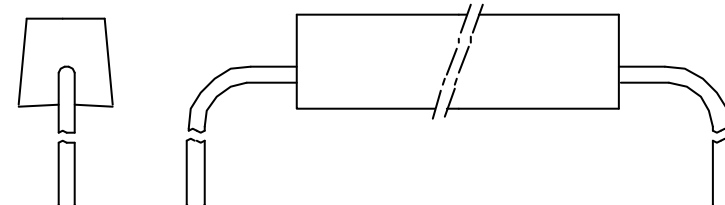
Flat bolt on



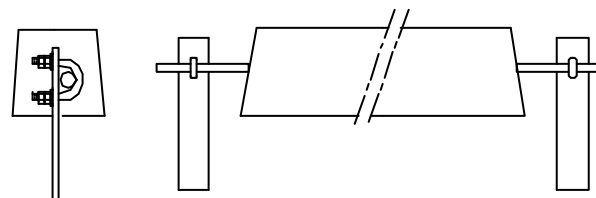
Standard core stand-off bracket, welded fixing



Standard core – double crank



Standard core – single crank



Standard core stand-off bracket, U-bolt fixing