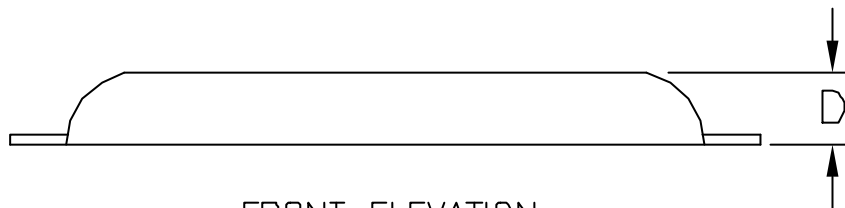


PLAN



FRONT ELEVATION

CP Tech Aluminium Hull Anode							
TYPE	A	B	C	D	INSERT DIMS	NETT WEIGHT(KG)	GROSS WEIGHT(KG)
W131	300	200	95	30	25 X 6	1.2	1.4
W130	350	270	150	30	38 X 6	2.6	3.2
W111	530	395	150	30	38 X 6	4.5	5.2
W114	650	550	127	50	38 X 6	8.6	9.8
W117	650	550	130	65	50 X 9	10.1	11.6
W119	650	550	130	75	50 X 9	12.6	14.1
W118	650	550	130	96	50 X 9	16.5	18.0
W124	1015	915	130	50	50 X 9	14.1	16.0
W126	1015	915	130	75	50 X 9	21.0	24.0
W128	1015	920	130	104	50 X 9	30.0	33.0

All weights in kilograms.
 All dimensions in millimetre.
 All weights and dimensions are nominal.



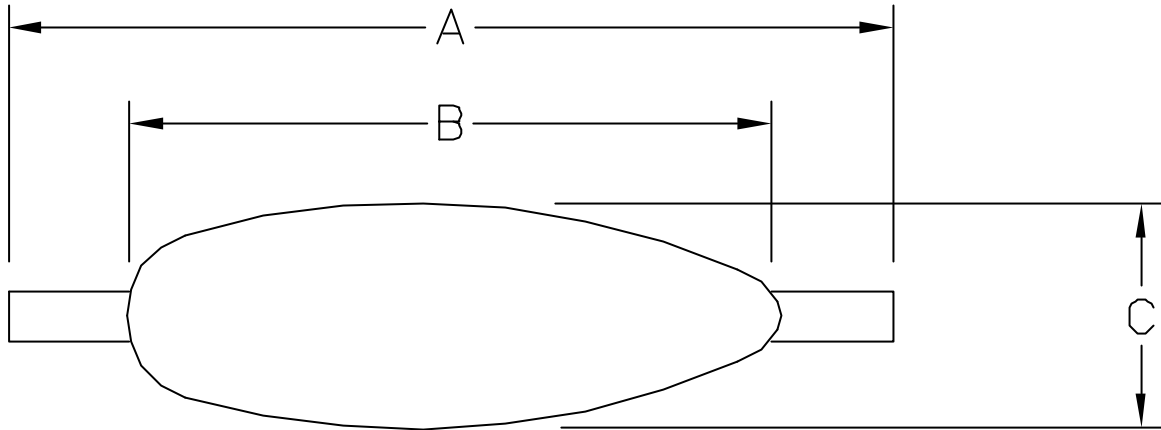
Cathodic Protection Technology Pte Ltd

4 Tuas Drive 1 Singapore 638671

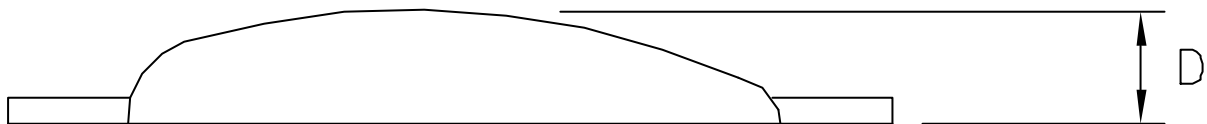
Tel: 6862-3551

Fax: 6861-6436

Email : cptech@singnet.com.sg



PLAN



FRONT ELEVATION

CP Tech High Purity Zinc Hull Anode

TYPE	A	B	C	D	INSERT DIMS	NETT WEIGHT(KG)	GROSS WEIGHT(KG)
WP2	300	220	75	38	18 X 3	2.25	2.55
WP5	380	290	100	50	30 X 5	4.65	5.0
W10Z	400	280	150	75	40 X 6	10.00	10.7

All weights in kilograms.
 All dimensions in millimetre.
 All weights and dimensions are nominal.



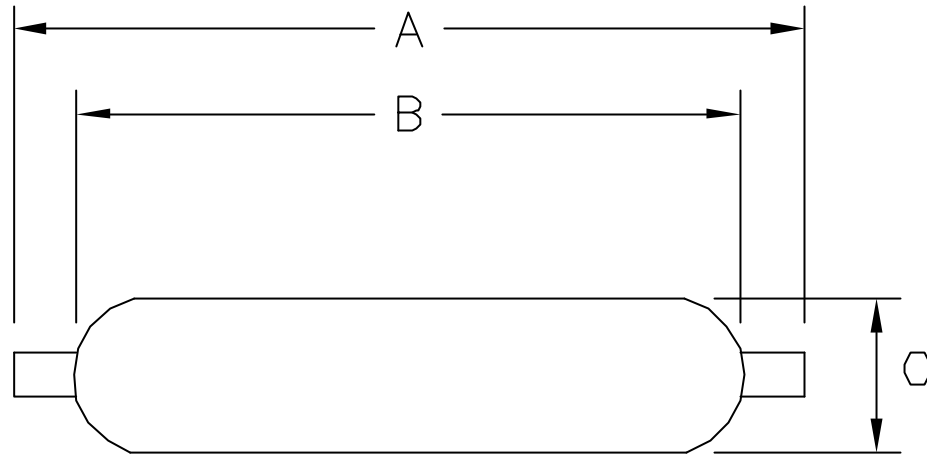
Cathodic Protection Technology Pte Ltd

4 Tuas Drive 1 Singapore 638671

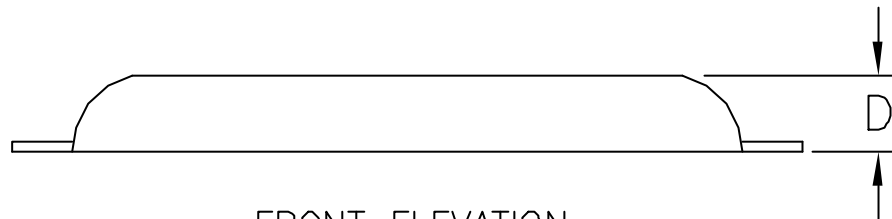
Tel: 6862-3551

Fax: 6861-6436

Email : cptech@singnet.com.sg



PLAN



FRONT ELEVATION

CP Tech High Purity Zinc Hull Anodes

TYPE	A	B	C	D	INSERT DIMS	NETT WEIGHT(KG)	GROSS WEIGHT(KG)
W6Z	350	270	150	32	38 X 6	6.5	7.1
W11Z	530	400	150	32	38 X 6	11.1	12.1
W14Z	650	550	130	50	38 X 6	21.3	22.5
W17Z	650	550	130	65	50 X 9	25.9	27.0
W19Z	650	550	130	75	50 X 9	33.2	34.7
W18Z	650	550	130	96	50 X 9	43.4	44.9
W24Z	1015	915	130	50	50 X 9	35.0	36.5

All weights in kilograms.
 All dimensions in millimetre.
 All weights and dimensions are nominal.



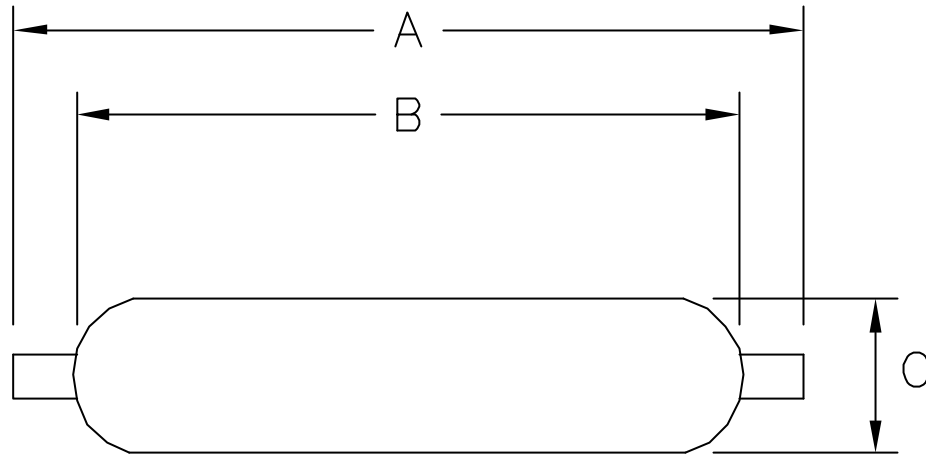
Cathodic Protection Technology Pte Ltd

4 Tuas Drive 1 Singapore 638671

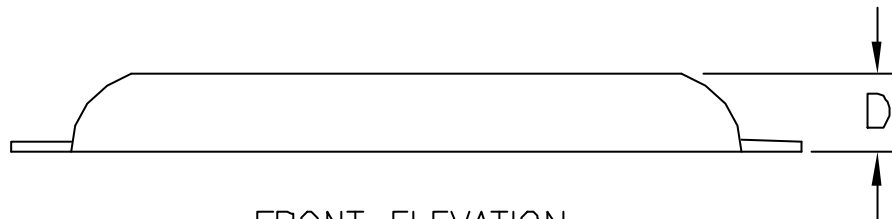
Tel: 6862-3551

Fax: 6861-6436

Email : cptech@singnet.com.sg



PLAN



FRONT ELEVATION

CP Tech High Purity Zinc Hull Anode

TYPE	A	B	C	D	INSERT DIMS	NETT WEIGHT(KG)	GROSS WEIGHT(KG)
Z41	425	305	75	38	30 X 4	4.1	4.5
Z50	425	305	75	40	30 X 4	4.6	5.0
Z64	425	305	90	45	30 X 4	6.4	6.8
Z81	425	305	152	32	30 X 4	8.1	8.5
Z93	425	305	152	35	30 X 4	9.3	9.7
Z100	425	305	152	38	30 X 4	10.0	10.4
Z140	625	456	102	53	32 X 6	14.0	15.0

All weights in kilograms.
 All dimensions in millimetre.
 All weights and dimensions are nominal.



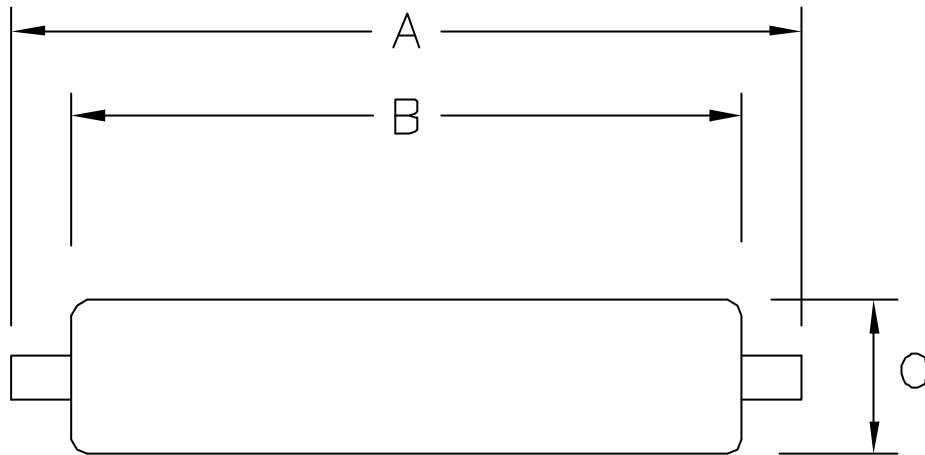
Cathodic Protection Technology Pte Ltd

4 Tuas Drive 1 Singapore 638671

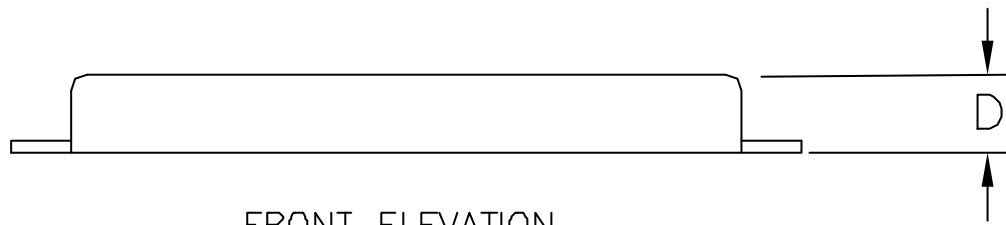
Tel: 6862-3551

Fax: 6861-6436

Email : cptech@singnet.com.sg



PLAN



FRONT ELEVATION

CP Tech High Purity Zinc Hull Anode

TYPE	A	B	C	D	INSERT DIMS	NETT WEIGHT(KG)	GROSS WEIGHT(KG)
Z170	750	585	134	37	38 X 6	17.0	18.3
Z250	750	585	142	53	38 X 6	25.0	26.3
Z350	750	585	149	69	38 X 6	35.0	36.3

All weights in kilograms.
 All dimensions in millimetre.
 All weights and dimensions are nominal.



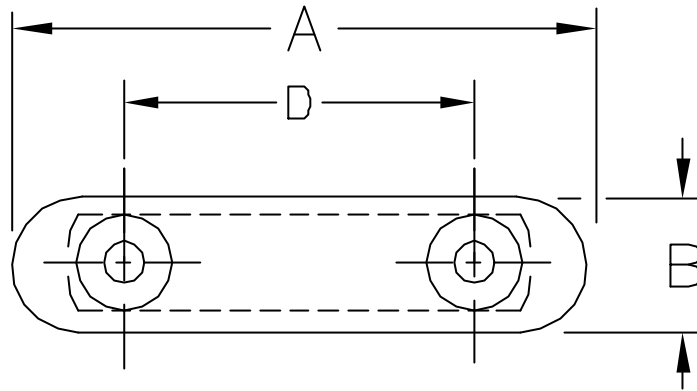
Cathodic Protection Technology Pte Ltd

4 Tuas Drive 1 Singapore 638671

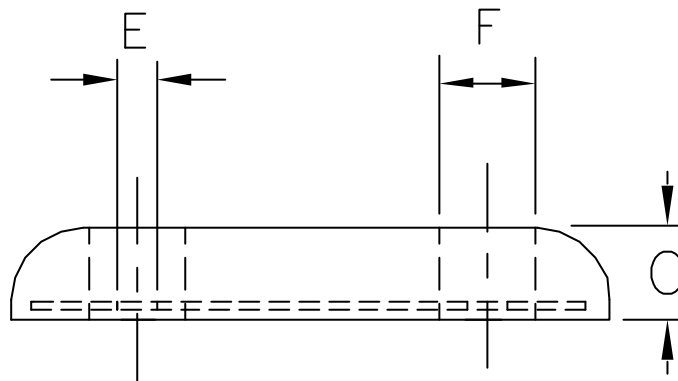
Tel: 6862-3551

Fax: 6861-6436

Email : cptech@singnet.com.sg



PLAN

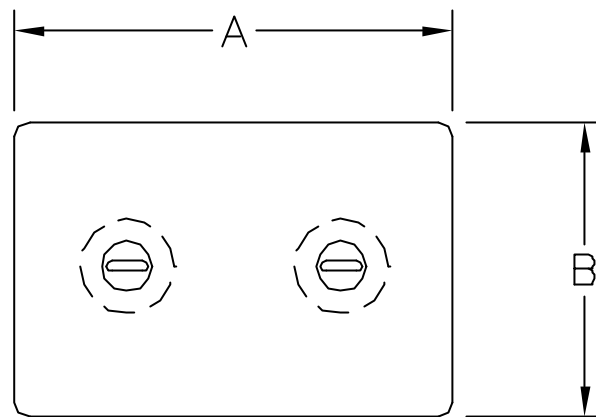


FRONT ELEVATION

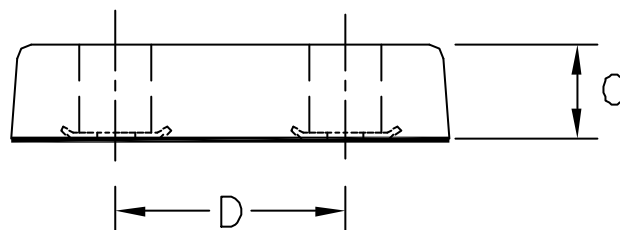
CP Tech High Purity Zinc Hull Anode

TYPE	A	B	C	D	E	F	NETT WEIGHT(KG)	GROSS WEIGHT(KG)
Z36B	305	76	36	205	Ø19	Ø50	3.6	4.1
Z45B	305	80	38	205	Ø17	Ø50	4.1	4.5
Z84B	300	150	30	200	Ø18	Ø32	7.6	8.4
Z114B	456	102	53	230	Ø23	Ø60	11.4	12.1

All weights in kilograms.
 All dimensions in millimetre.
 All weights and dimensions are nominal.



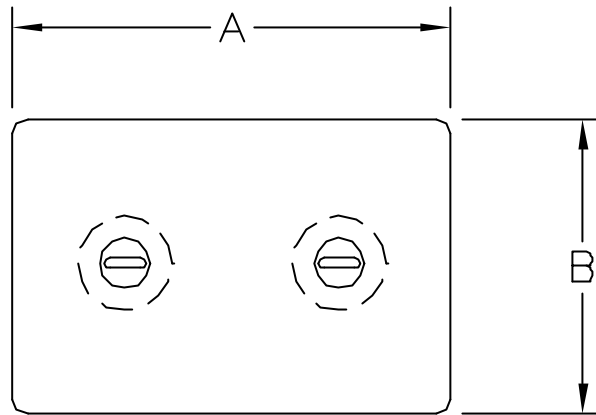
PLAN



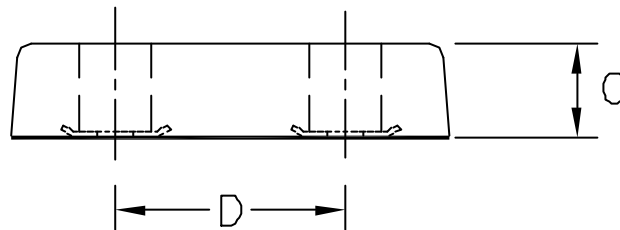
FRONT ELEVATION

CP Tech High Purity Zinc Bolted Hull Anode						
TYPE	A	B	C	D	NETT WEIGHT(KG)	GROSS WEIGHT(KG)
B2	150	75	25	75	1.15	1.45
B3	200	100	20	110	2.2	2.5
B4	200	100	30	110	3.3	3.6
B4E	200	100	40	110	3.9	4.2
B6	300	150	20	160	5.5	5.9
B8	300	150	25	160	6.9	7.3
B9	300	150	30	160	7.9	8.3
B9E	300	150	40	160	10.6	11.0
B9F	300	150	50	160	13.4	13.8
B9G	300	150	75	160	21.6	22.0
B12	300	200	40	160	14.8	15.2
B12E	300	200	65	160	26.4	26.8

All weights in kilograms.
 All dimensions in millimetre.
 All weights and dimensions are nominal.



PLAN



FRONT ELEVATION

CP Tech Aluminium Bolted Hull Anode						
TYPE	A	B	C	D	NETT WEIGHT(KG)	GROSS WEIGHT(KG)
B2	150	75	25	75	0.4	0.7
B3	200	100	20	110	0.77	1.07
B4	200	100	30	110	1.15	1.45
B4E	200	100	40	110	1.5	1.8
B6	300	150	20	160	2.25	2.65
B8	300	150	25	160	2.49	2.89
B9	300	150	30	160	2.91	3.31
B9E	300	150	40	160	4.2	4.6
B9F	300	150	50	160	5.1	5.5
B9G	300	150	75	160	8.1	8.5
B12	300	200	40	160	5.6	6.0
B12E	300	200	65	160	10.3	10.7

All weights in kilograms.
 All dimensions in millimetre.
 All weights and dimensions are nominal.



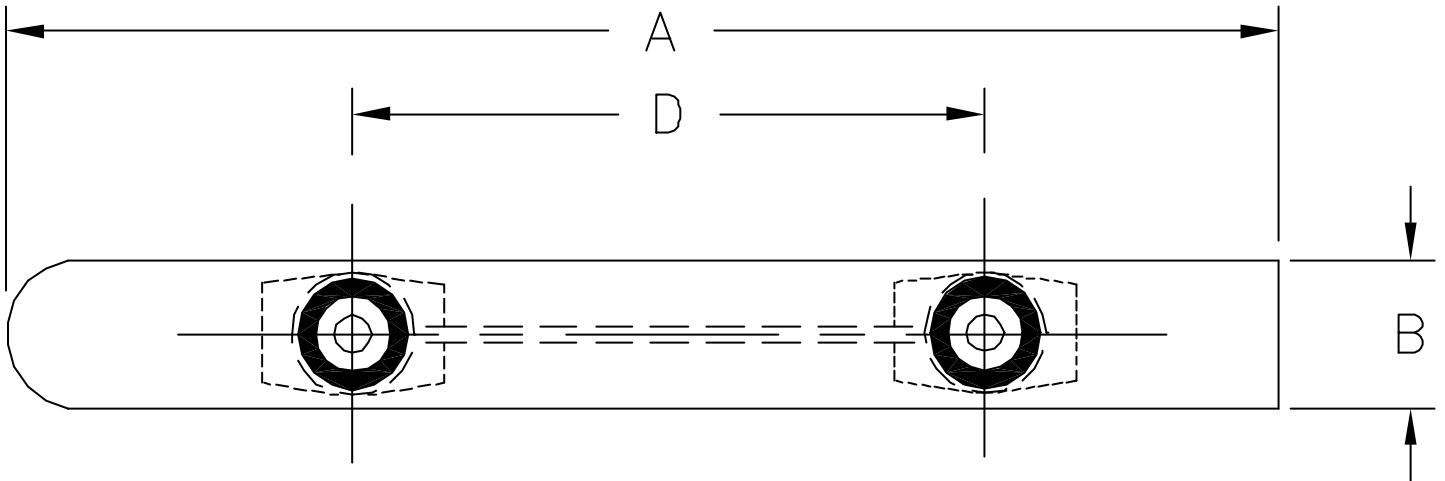
Cathodic Protection Technology Pte Ltd

4 Tuas Drive 1 Singapore 638671

Tel: 6862-3551

Fax: 6861-6436

Email : cptech@singnet.com.sg



PLAN



FRONT ELEVATION

CP Tech High Purity Zinc Bolted Hull Anode						
TYPE	A	B	C	D	NETT WEIGHT(KG)	GROSS WEIGHT(KG)
B18	800	75	50	400	15.35	15.81

All weights in kilograms.
 All dimensions in millimetre.
 All weights and dimensions are nominal.



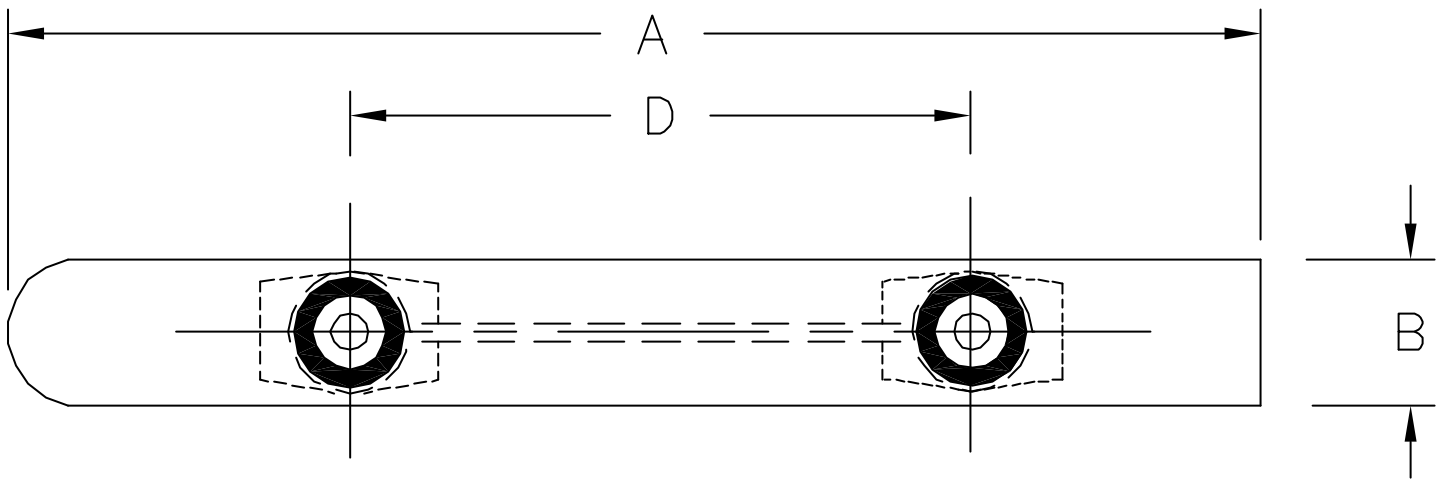
Cathodic Protection Technology Pte Ltd

4 Tuas Drive 1 Singapore 638671

Tel: 6862-3551

Fax: 6861-6436

Email : cptech@singnet.com.sg



PLAN



FRONT ELEVATION

CP Tech Aluminium Bolted Hull Anode

TYPE	A	B	C	D	NETT WEIGHT(KG)	GROSS WEIGHT(KG)
B18	800	75	50	400	5.84	6.30

All weights in kilograms.
 All dimensions in millimetre.
 All weights and dimensions are nominal.



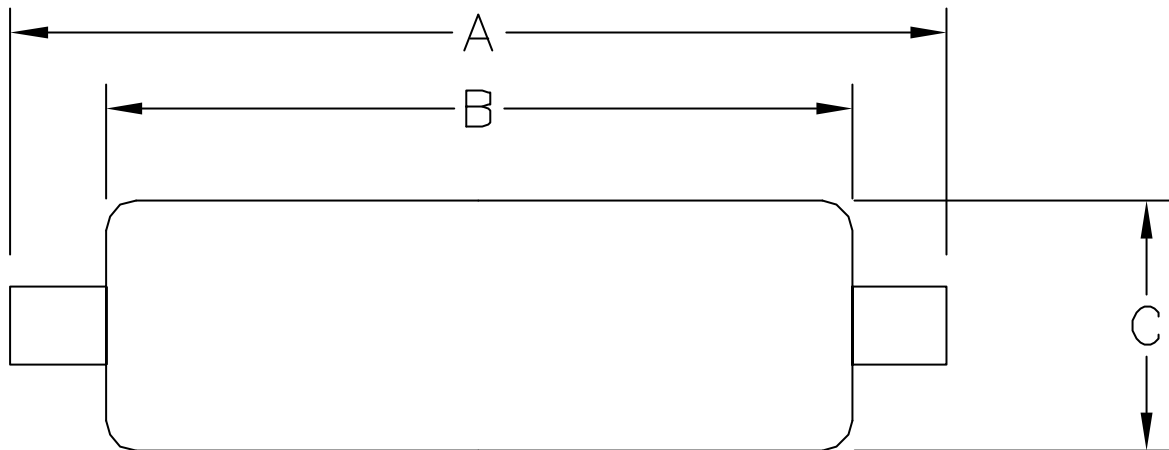
Cathodic Protection Technology Pte Ltd

4 Tuas Drive 1 Singapore 638671

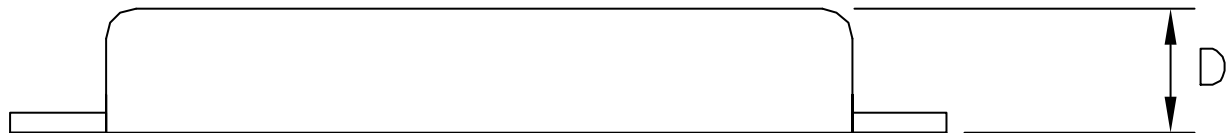
Tel: 6862-3551

Fax: 6861-6436

Email : cptech@singnet.com.sg



PLAN



FRONT ELEVATION

CP Tech High Purity Zinc Welded Hull Anode						
TYPE	A	B	C	D	NETT WEIGHT(KG)	GROSS WEIGHT(KG)
S-2	238	150	75	25	1.3	1.7
S-3	300	200	100	20	2.6	3.0
S-4	300	200	100	30	3.8	4.2
S-4E	300	200	100	40	5.85	6.25

All weights in kilograms.

All dimensions in millimetre.

All weights and dimensions are nominal.



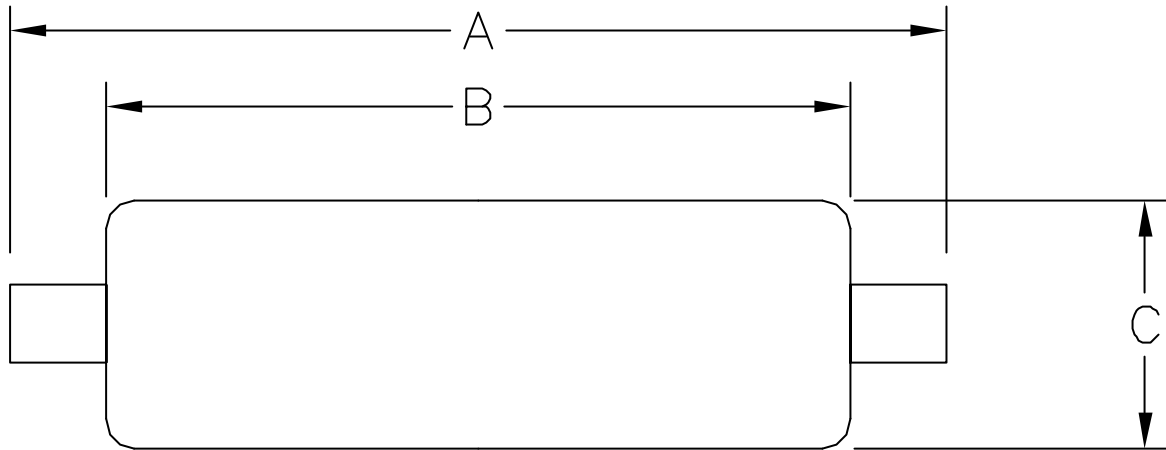
Cathodic Protection Technology Pte Ltd

4 Tuas Drive 1 Singapore 638671

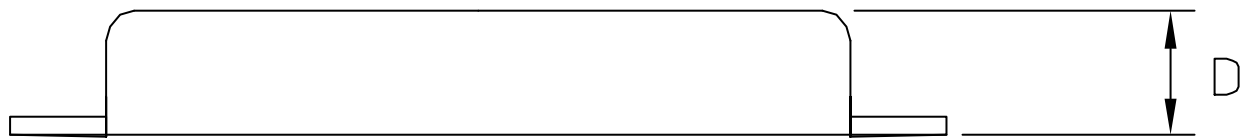
Tel: 6862-3551

Fax: 6861-6436

Email : cptech@singnet.com.sg



PLAN



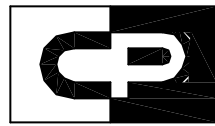
FRONT ELEVATION

CP Tech Aluminium Welded Hull Anode						
TYPE	A	B	C	D	NETT WEIGHT(KG)	GROSS WEIGHT(KG)
S-2	238	150	75	25	0.3	0.7
S-3	300	200	100	20	1.0	1.4
S-4	300	200	100	30	1.33	1.73
S-4E	300	200	100	40	2.3	2.7

All weights in kilograms.

All dimensions in millimetre.

All weights and dimensions are nominal.



TECH



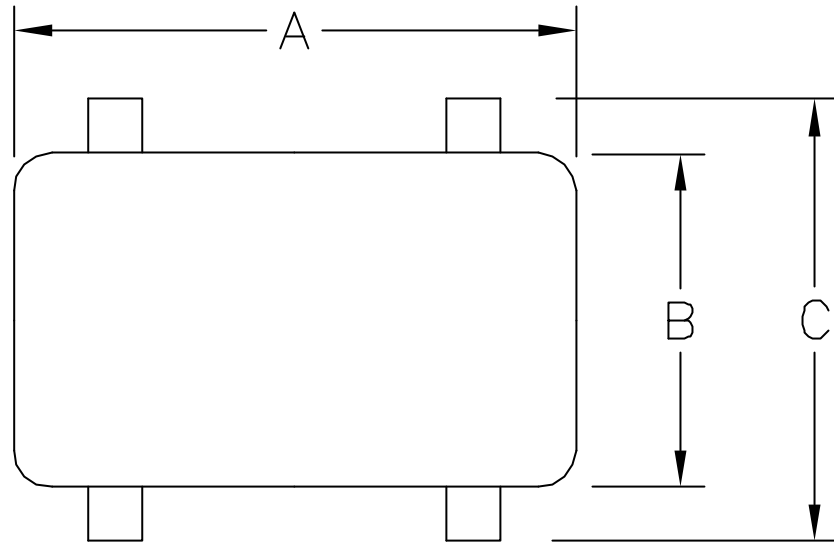
Cathodic Protection Technology Pte Ltd

4 Tuas Drive 1 Singapore 638671

Tel: 6862-3551

Fax: 6861-6436

Email : cptech@singnet.com.sg



PLAN



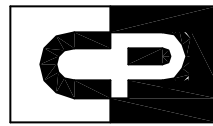
FRONT ELEVATION

CP Tech High Purity Zinc Welded Hull Anode						
TYPE	A	B	C	D	NETT WEIGHT(KG)	GROSS WEIGHT(KG)
S-6	300	150	270	20	5.75	6.5
S-8	300	150	270	25	7.25	8.0
S-9	300	150	270	30	8.75	9.5
S-9E	300	150	270	40	11.25	12.0
S-9F	300	150	270	50	13.85	14.6

All weights in kilograms.

All dimensions in millimetre.

All weights and dimensions are nominal.



TECH



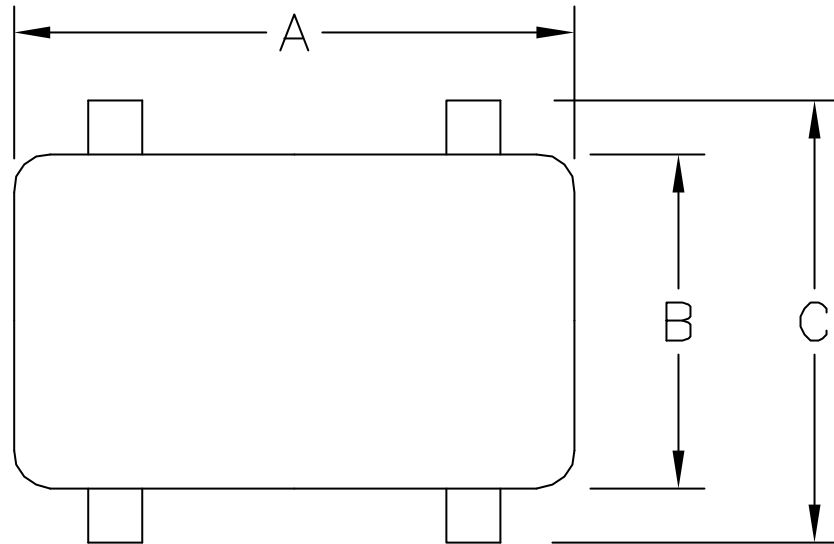
Cathodic Protection Technology Pte Ltd

4 Tuas Drive 1 Singapore 638671

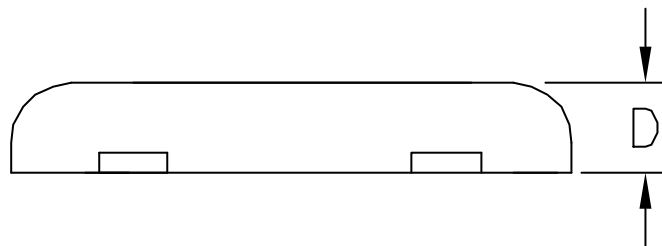
Tel: 6862-3551

Fax: 6861-6436

Email : cptech@singnet.com.sg



PLAN



FRONT ELEVATION

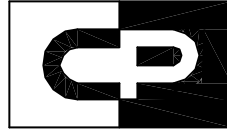
CP Tech Aluminium Welded Hull Anode

TYPE	A	B	C	D	NETT WEIGHT(KG)	GROSS WEIGHT(KG)
S-6	300	150	270	20	2.2	2.95
S-8	300	150	270	25	2.75	3.5
S-9	300	150	270	30	3.32	4.07
S-9E	300	150	270	40	4.25	5.0
S-9F	300	150	270	50	5.25	6.0

All weights in kilograms.

All dimensions in millimetre.

All weights and dimensions are nominal.



TECH



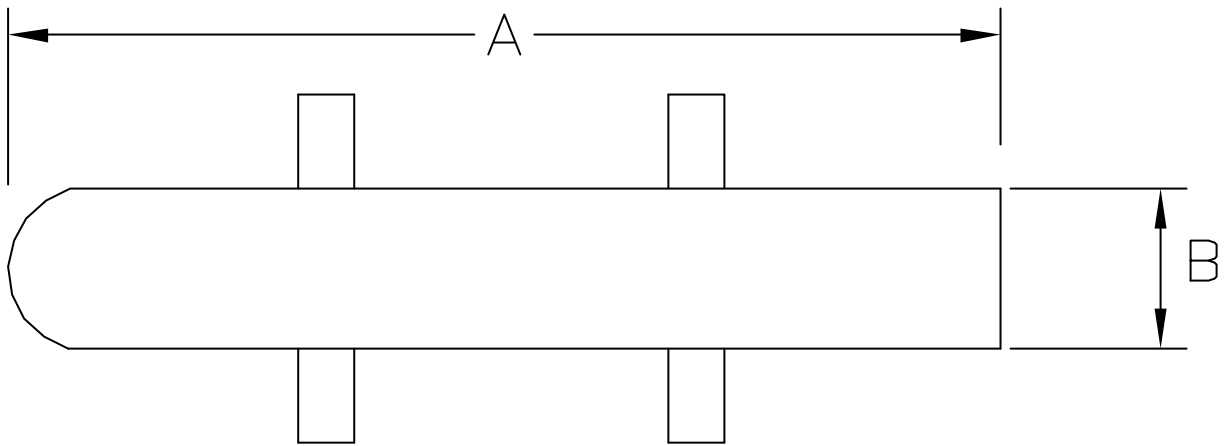
Cathodic Protection Technology Pte Ltd

4 Tuas Drive 1 Singapore 638671

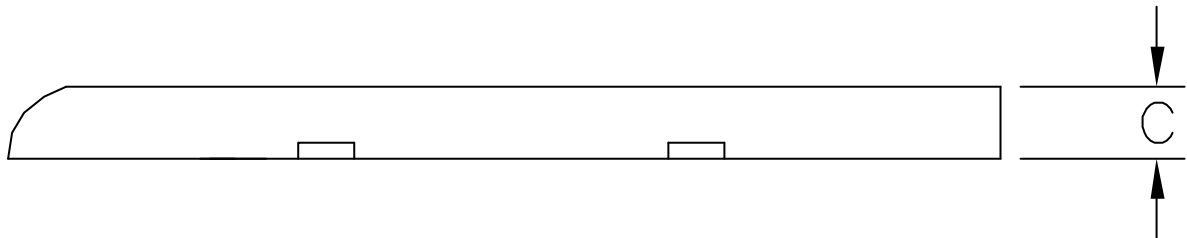
Tel: 6862-3551

Fax: 6861-6436

Email : cptech@singnet.com.sg



PLAN



FRONT ELEVATION

CP Tech High Purity Zinc Hull Anode					
TYPE	A	B	C	NETT WEIGHT(KG)	GROSS WEIGHT(KG)
S-18	800	75	50	18.6	19.0

All weights in kilograms.

All dimensions in millimetre.

All weights and dimensions are nominal.



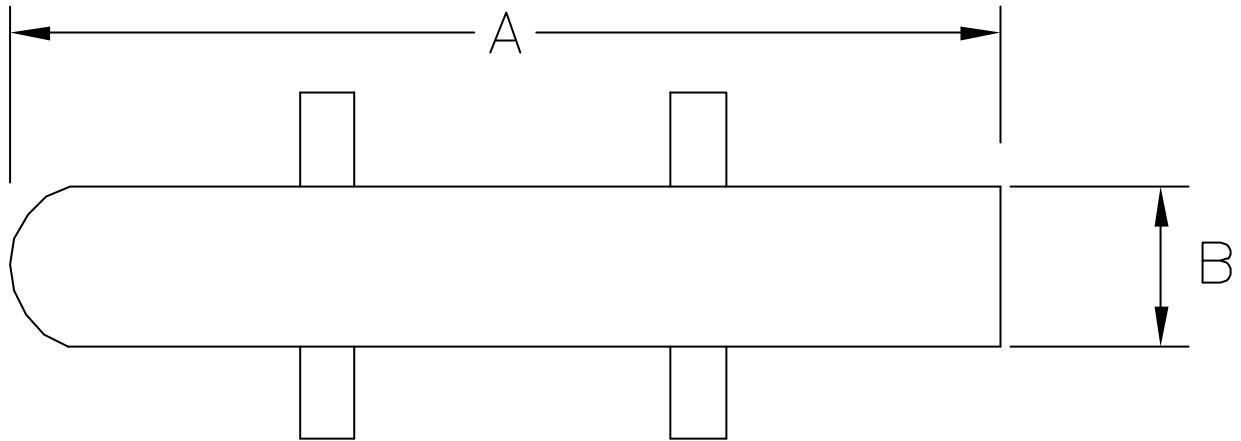
Cathodic Protection Technology Pte Ltd

4 Tuas Drive 1 Singapore 638671

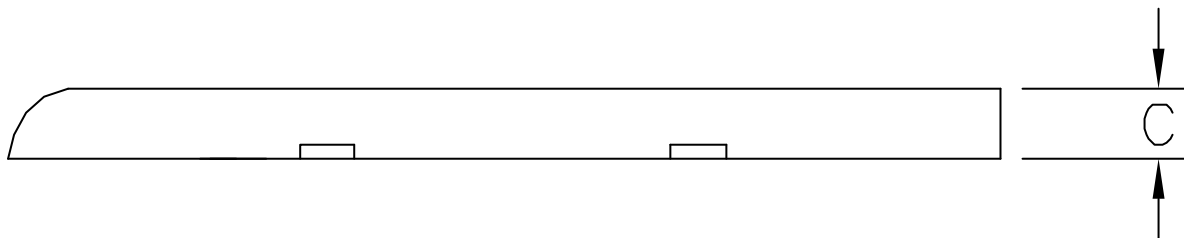
Tel: 6862-3551

Fax: 6861-6436

Email : cptech@singnet.com.sg



PLAN



FRONT ELEVATION

CP Tech Aluminium Hull Anode					
TYPE	A	B	C	NETT WEIGHT(KG)	GROSS WEIGHT(KG)
S-18	800	75	50	7.1	7.50

All weights in kilograms.
 All dimensions in millimetre.
 All weights and dimensions are nominal.